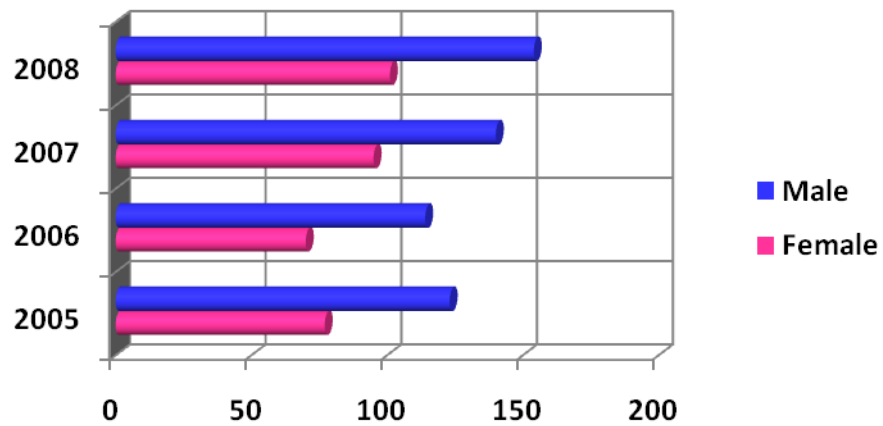
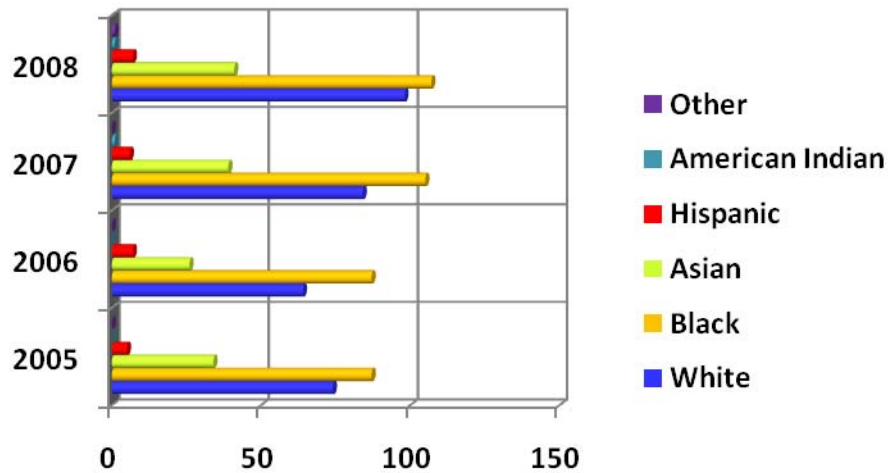


Fall 2005-2008 CUPA HR Faculty Full-time By Gender



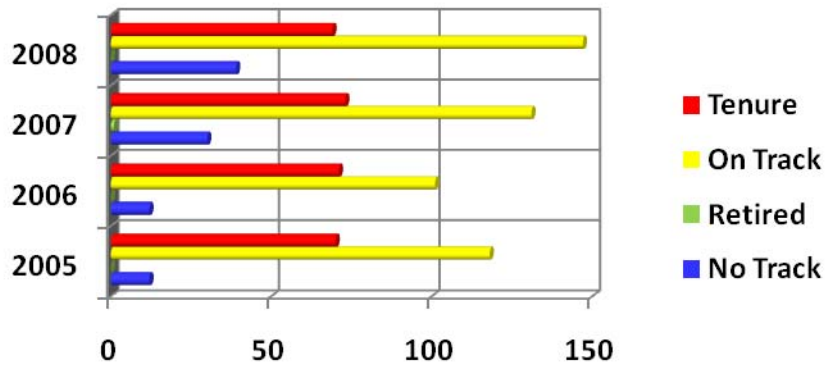
Gender	2005	2006	2007	2008
Female	77	70	95	101
Male	123	114	140	154
Total	200	184	235	255

By Race



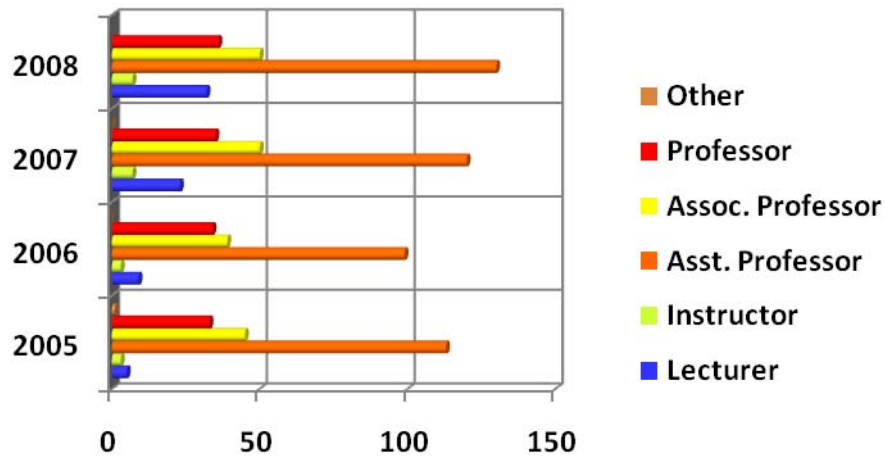
Race	2005	2006	2007	2008
White	74	64	84	98
Black	87	87	105	107
Asian	34	26	39	41
Hispanic	5	7	6	7
American Indian	0	0	1	1
Other	0	0	0	1
Total	200	184	235	255

Fall 2005-2008 CUPA HR Faculty Full-time By Tenure Status



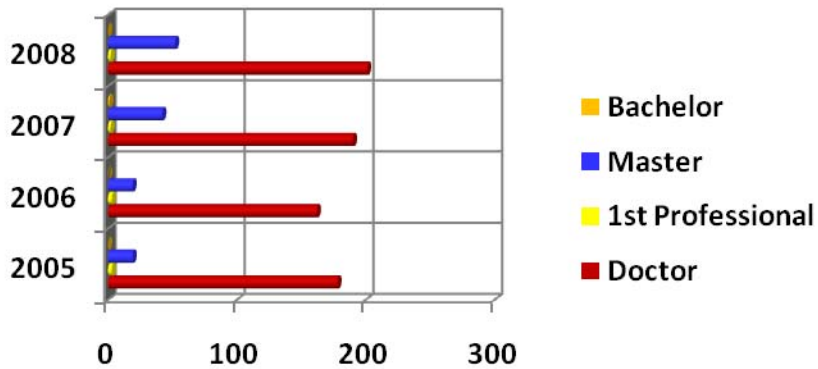
Status	2005	2006	2007	2008
No Track	12	12	30	39
Retired	0	0	1	0
On Track	118	101	131	147
Tenure	70	71	73	69
Total	200	184	235	255

By Position



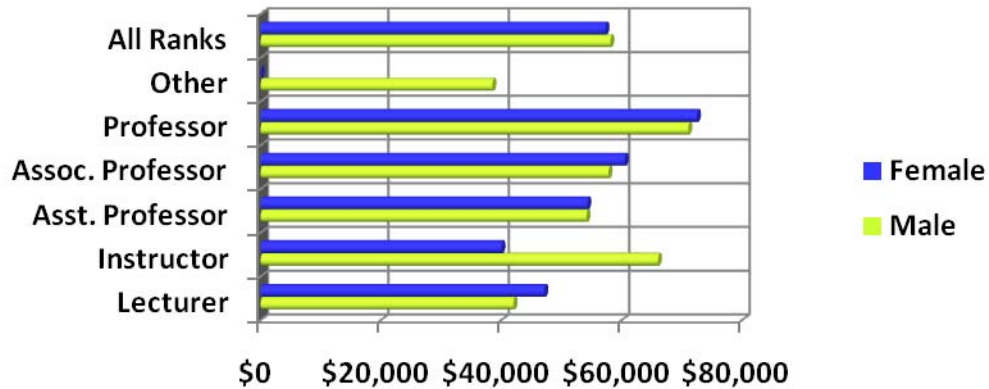
Position	2005	2006	2007	2008
Lecturer	5	9	23	32
Instructor	3	3	7	7
Asst. Professor	113	99	120	130
Assoc. Professor	45	39	50	50
Professor	33	34	35	36
Other	1	0	0	0
Total	200	184	235	255

Fall 2005-2008 CUPA HR Faculty Full-time By Degree



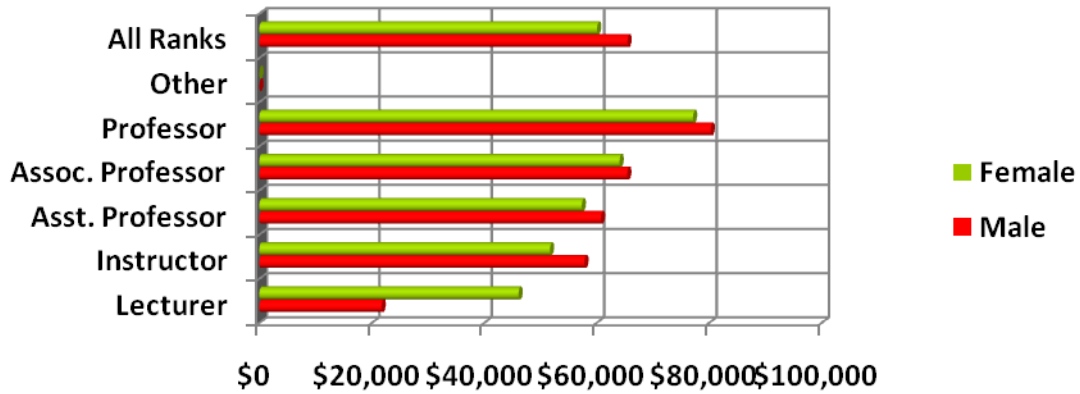
Degree	2005	2006	2007	2008
Doctor	178	162	190	201
1 st Professional	3	3	2	2
Master	19	19	42	52
Bachelor	0	0	1	0
Total	200	184	235	255

By Fall 2005 CUPA HR Faculty Full-time By Average Salary



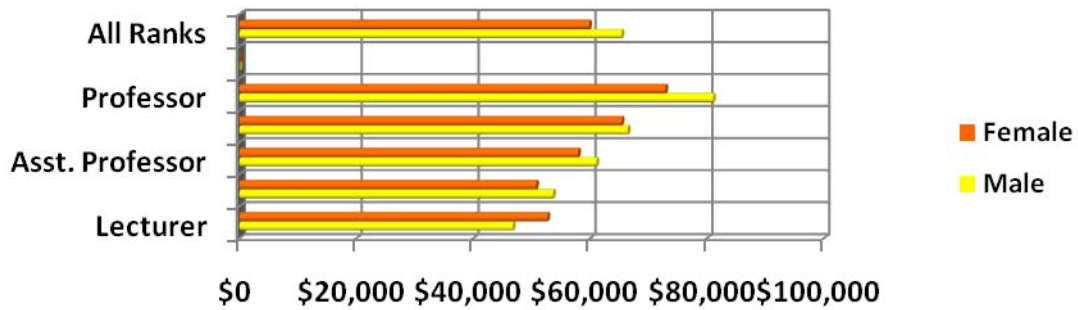
Salary	Male	Female
Lecturer	\$42,000	\$47,106
Instructor	\$66,000	\$40,000
Asst. Professor	\$54,122	\$54,257
Assoc. Professor	\$57,775	\$60,469
Professor	\$71,032	\$72,475
Other	\$38,499	\$0
All Ranks	\$58,094	\$57,271

Fall 2006 CUPA HR Faculty Full-time By Average Salary



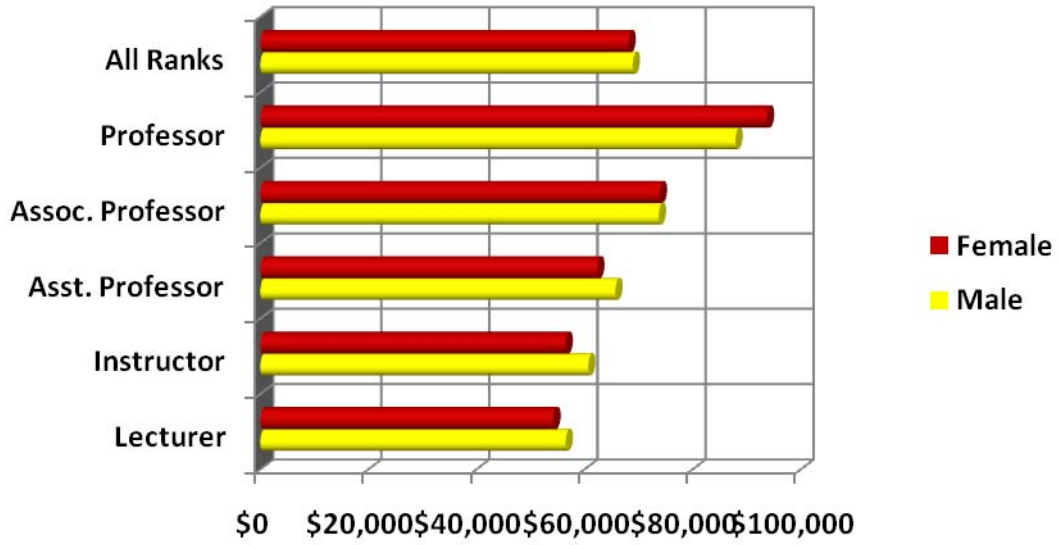
Salary	Male	Female
Lecturer	\$21,736	\$46,097
Instructor	\$57,807	\$51,676
Asst. Professor	\$60,761	\$57,346
Assoc. Professor	\$65,432	\$64,065
Professor	\$80,275	\$77,125
Other	\$0	\$0
All Ranks	\$65,477	\$60,062

By Fall 2007 CUPA HR Faculty Full-time By Average Salary



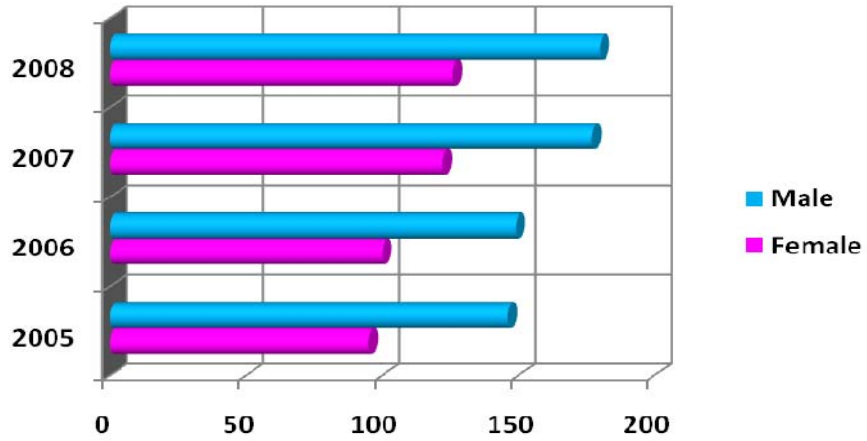
Salary	Male	Female
Lecturer	\$46,747	\$52,672
Instructor	\$53,654	\$50,748
Asst. Professor	\$61,068	\$57,934
Assoc. Professor	\$66,430	\$65,388
Professor	\$81,037	\$72,884
Other	\$0	\$0
All Ranks	\$65,359	\$59,819

Fall 2008 CUPA HR Faculty Full-time By Average Salary



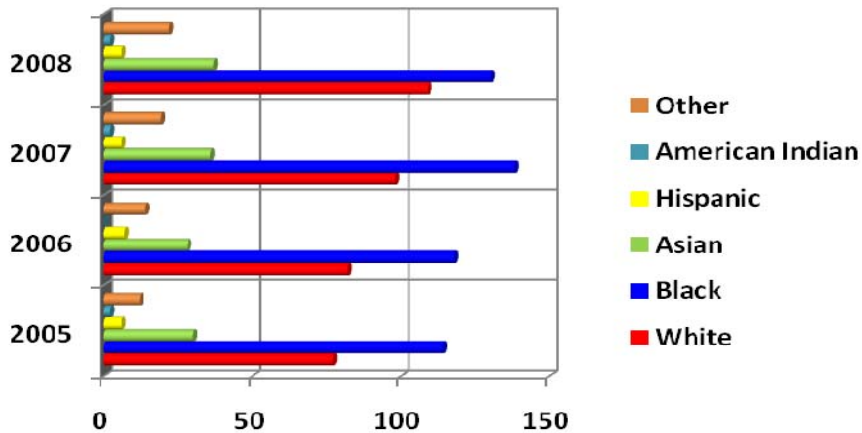
Salary	Male	Female
Lecturer	\$56,494	\$54,217
Instructor	\$60,656	\$56,473
Asst. Professor	\$65,686	\$62,335
Assoc. Professor	\$73,721	\$73,899
Professor	\$87,901	\$93,734
All Ranks	\$68,892	\$68,132

Fall 2005-2008 AAUP Faculty Full-time By Gender



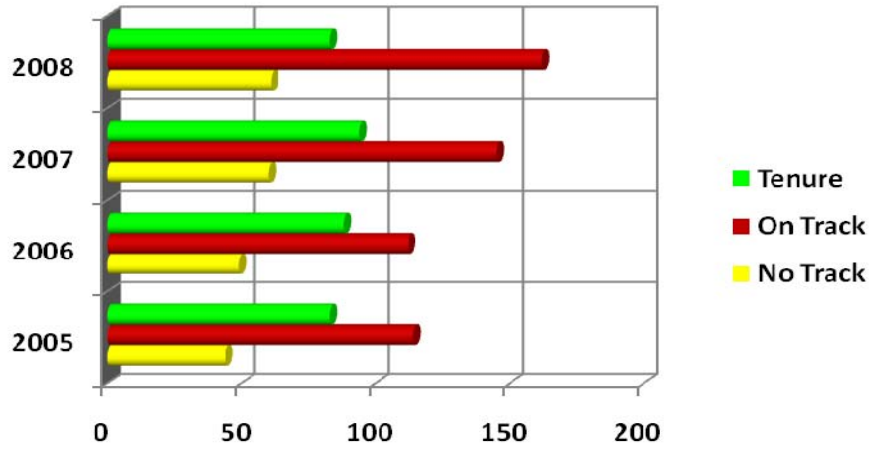
Gender	2005	2006	2007	2008
Female	95	100	122	126
Male	146	149	177	180
Total	241	249	299	306

By Race



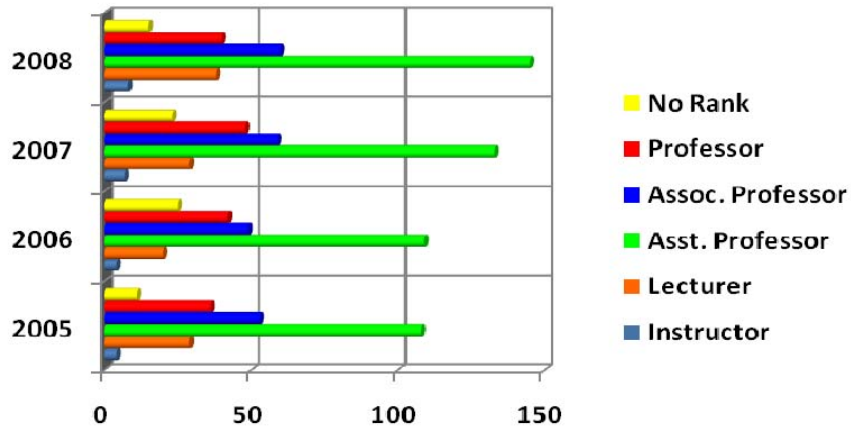
Race	2005	2006	2007	2008
White	77	82	98	109
Black	114	118	138	130
Asian	30	28	36	37
Hispanic	6	7	6	6
American Indian	2	0	2	2
Other	12	14	19	22
Total	241	249	299	306

Fall 2005-2008 AAUP Faculty Full-time By Tenure Status



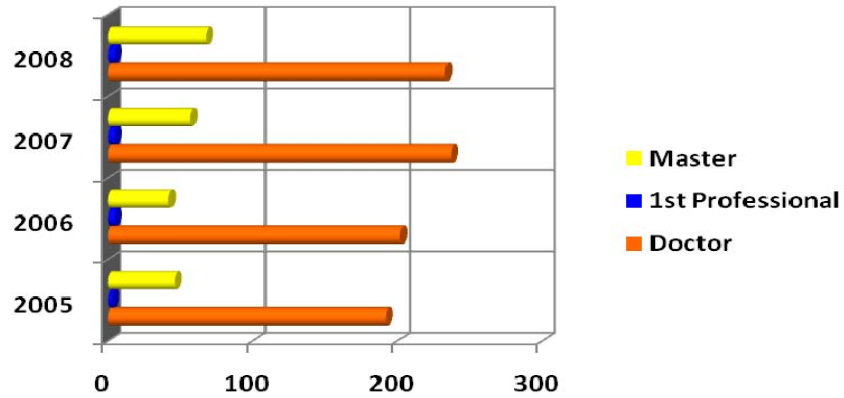
Status	2005	2006	2007	2008
No Track	44	49	60	61
On Track	114	112	145	162
Tenure	83	88	94	83
Total	241	249	299	306

By Position



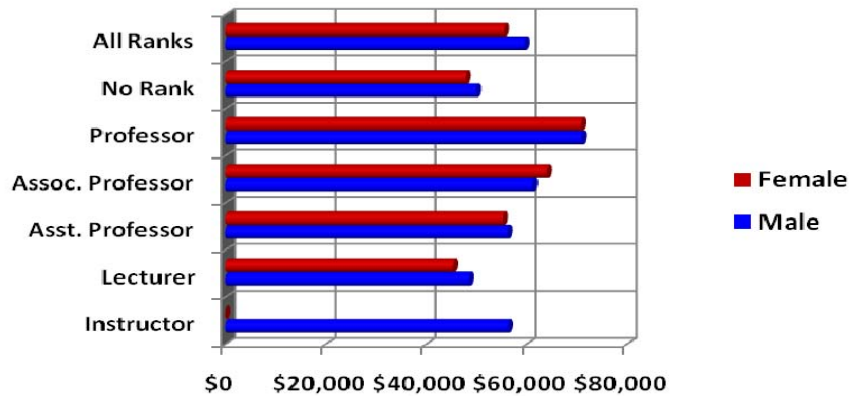
Position	2005	2006	2007	2008
Instructor	4	4	7	8
Lecturer	29	20	29	38
Asst. Professor	108	109	133	145
Assoc. Professor	53	49	59	60
Professor	36	42	48	40
No Rank	11	25	23	15
Total	241	249	299	306

Fall 2005-2008 AAUP Faculty Full-time By Degree



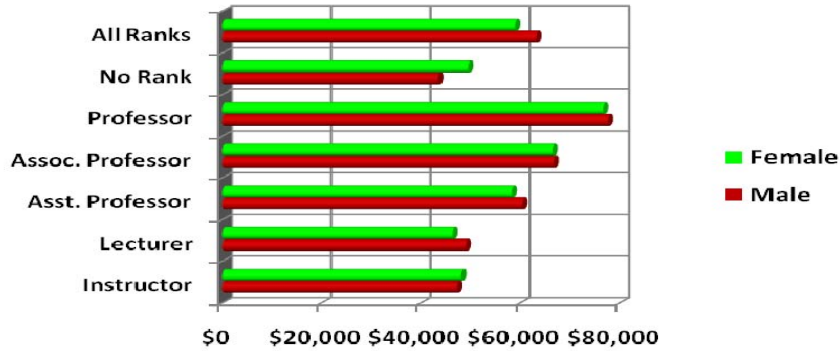
Degree	2005	2006	2007	2008
Doctor	192	202	237	233
1 st Professional	3	5	5	5
Master	46	42	57	68
Total	241	249	299	306

By Fall 2005 AAUP Faculty Full-time By Average Salary



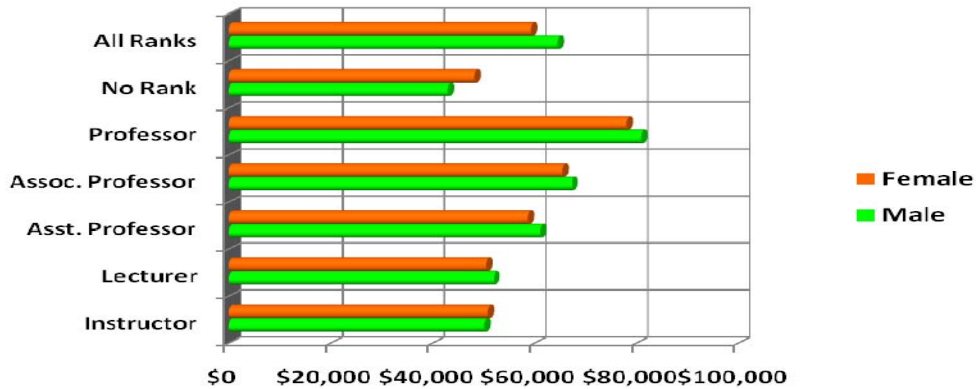
Salary	Male	Female
Instructor	\$56,301	\$0
Lecturer	\$48,469	\$45,366
Asst. Professor	\$56,225	\$55,257
Assoc. Professor	\$61,231	\$64,064
Professor	\$70,936	\$70,822
No Rank	\$49,980	\$47,790
All Ranks	\$59,598	\$55,494

Fall 2006 AAUP Faculty Full-time By Average Salary



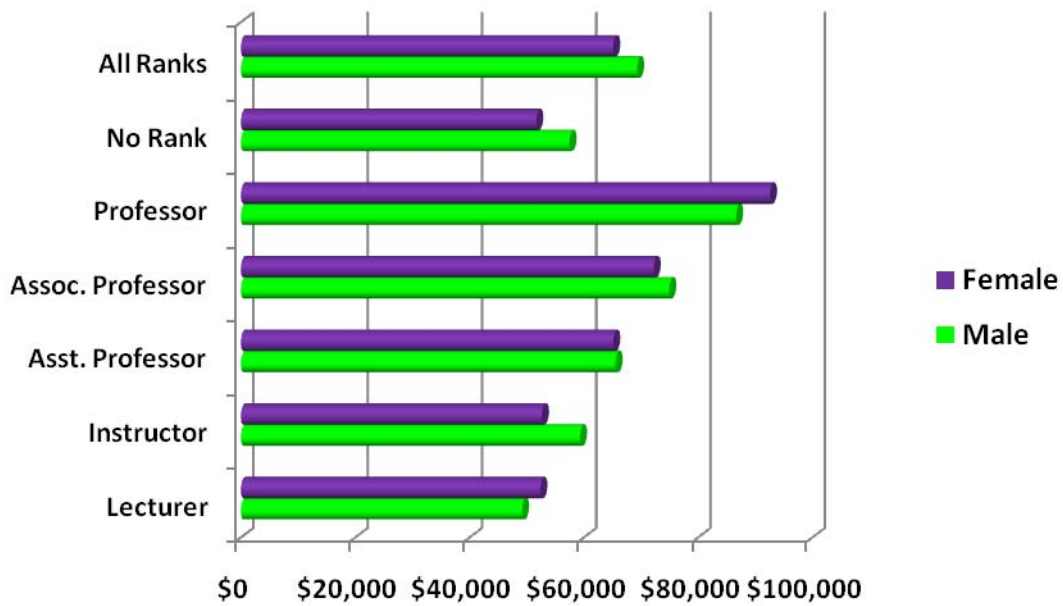
Salary	Male	Female
Instructor	\$47,297	\$48,082
Lecturer	\$48,987	\$46,354
Asst. Professor	\$60,411	\$58,255
Assoc. Professor	\$66,677	\$66,440
Professor	\$77,665	\$76,678
No Rank	\$43,428	\$49,465
All Ranks	\$63,212	\$58,934

By Fall 2007 AAUP Faculty Full-time By Average Salary



Salary	Male	Female
Instructor	\$50,081	\$50,749
Lecturer	\$51,936	\$50,451
Asst. Professor	\$61,020	\$58,702
Assoc. Professor	\$67,270	\$65,388
Professor	\$80,823	\$78,096
No Rank	\$42,997	\$48,235
All Ranks	\$64,482	\$59,278

Fall 2008 AAUP Faculty Full-time By Average Salary



Salary	Male	Female
Lecturer	\$49,194	\$52,402
Instructor	\$59,333	\$52,664
Asst. Professor	\$65,553	\$65,152
Assoc. Professor	\$74,950	\$72,232
Professor	\$86,668	\$92,576
No Rank	\$57,484	\$51,681
All Ranks	\$69,335	\$65,152